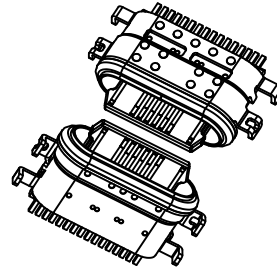
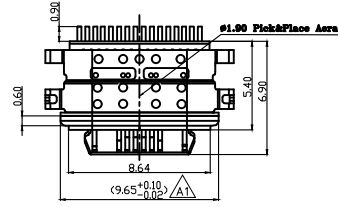
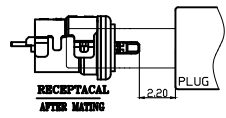
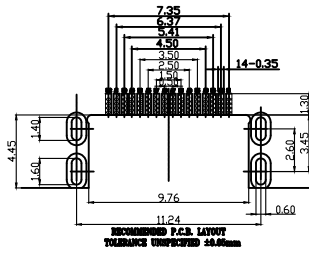
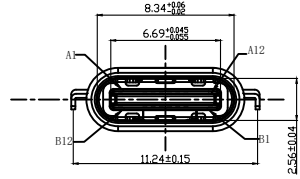
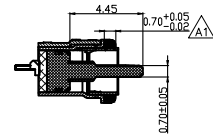


**ROHS**

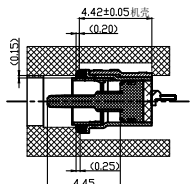
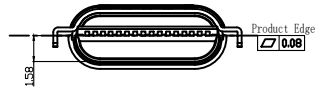
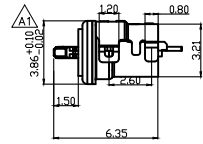
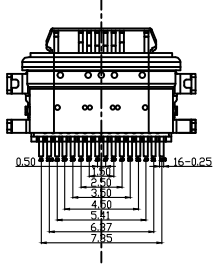
REV.	ECN. NO.	DESCRIPTION	ENG	DATE
A				



- NOTES:  
SPECIFICATION:
1. CURRENT RATING: 8.0A MAX
  2. VOLTAGE: 100 VAC
  3. TEMPERATURE RANGE: -30 °C ~ 85 °C
  4. CONTACT RESISTANCE: 40 MILLIONHM MAX
  5. INSULATION RESISTANCE: 100 MEGOHMS MIN.
  6. INSERTION FORCE : 6N~20N
  7. UNMATING FORCE: 8N~20N
  8. DURABILITY: 10,000 CYCLES



A1	GND	B12	GND
A4	VBUS	B9	VBUS
A5	CC1	B8	SBU2
A6	DP1	B7	DN2
A7	DN1	B6	DP2
A8	SBU1	B5	CC2
A9	VBUS	B4	VBUS
A12	GND	B1	GND
PIN	SIGNAL NAME	PIN	SIGNAL NAME



Assembly drawing

9	SEALING	SILICON DIOXIDE	---	
8	EMC	STAINLESS STEEL	---	
7	SHELL	STAINLESS STEEL	Ni Plated	1PCS
6	OVER SHELL	STAINLESS STEEL	Ni Plated	1PCS
5	SHIELDING PLATE	STAINLESS STEEL	---	1PCS
4	MD	HIGH TEMPERATURE PLASTIC	PA9T- BLACK	1PCS
3	CONTACT	COPPER ALLOY	Au:30u"/Ni Plated	1SET
2	CONTACT	COPPER ALLOY	Au:30u"/Ni Plated	1SET
1	HOUSING	HIGH TEMPERATURE PLASTIC	PA9T -BLACK	1PCS
NO.	DESCRIPTION	MATERIAL	REMARKS	QTY

DESIGN	MISS ZENG	SC ALL	
DRAWIGN	MISS LI	ANIT	MM
CHECK	Mr. ZENG	SIZE	A4: 210*297
APPROVAL		VERSION	01

未注公差 TOLERANCE	
X ±0.50	X° ±2°
.X ±0.30	.X° ±1°
XX ±0.20	XX° ±0.5°
XXX ±0.10	

品名: 连接器  
型号: C F 单排16P 沉板1.58 防水IP68型CONN

**东莞市航宏电子科技有限公司**  
Dongguan Hanghong Electronics Co., Ltd.  
Hanghong