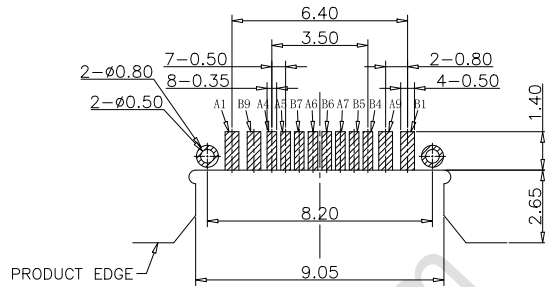


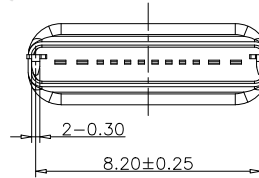
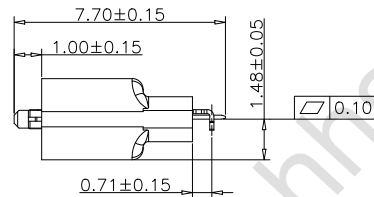
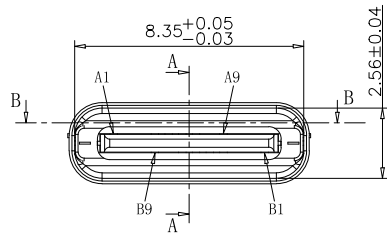
SECTION A-A  
SCALE 1:1



RECOMMEND P.C.B LAYOUT (COMPONENT SIDE)  
TOLERANCE FOR PCB LAYOUT IS ±0.05

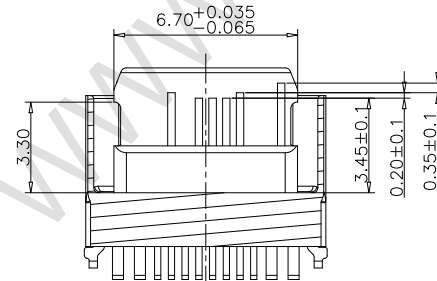
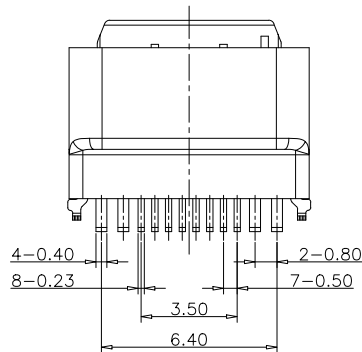
备注 (NOTE):

1. 电气特性:
  - 1.1. 接触区: 接触电阻40mΩ Max, 允许10mΩ变化量. 测试条件: 20mv, 100mA下测量.
  - 1.2. 接触电流: 3A VBUS引脚; 1.25A用于GND引脚; 其他引脚为0.25A.
  - 1.3. 额定电压: 30V.
  - 1.4. 耐电电压: 100VR. M. S.
  - 1.5. 绝缘电阻: 至少100兆欧.
2. 机械性能:
  - 3.1. 插入力: 0.51-2.04Kg
  - 3.2. 拔出力: 0.82-2.04Kg
  - 3.3. 耐久性: 0.61-2.04Kg
  - 3.4. 插拔次数: 10000次.
  4. 可焊性: 温度210-230℃, 时间10秒.
  5. 工作环境: -20℃ to +85℃.

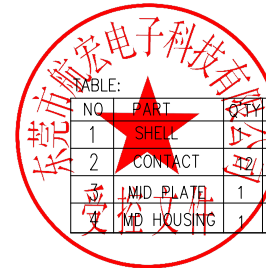


USB TYPE C PIN ASSIGNMENTS

PIN NUMBER	SIGNAL NAME	PIN NUMBER	SIGNAL NAME
A1	GND		
A4	VBUS	B9	VBUS
A5	CC1		
A6	Dp1	B7	Dn2
A7	Dn1	B6	Dp2
		B5	CC2
A9	VBUS	B4	VBUS
		B1	GND



SECTION B-B  
SCALE 1:1



NO.	PART	QTY	Material
1	SHELL	1	STAINLESS STEEL, Ni PLATED 30u"Min
2	CONTACT	2	COPPER STEEL, Ni 50u"Min; Au u"
	LIMB PLATE	1	STAINLESS STEEL, NO PLATING
	MD HOUSING	1	HIGH TEMPERATURE RESISTANT PLASTIC BLACK UL94 V-0

DESIGN	MISS ZENG	SC ALL			TOLERANCE	ANGLES	品名:
DRAWING	MISS LI	ANIT	mm				TYPE-C连接器
CHECK	Mr. ZENG	SIZE	A4 : 210*297				型号: TYPE-C 12P 母座防水拉伸壳 无护脚L=7.6MM
APPROVAL		VERSION	01				



**东莞市航宏电子科技有限公司**  
Dongguan Hanghong Electronics Co., Ltd.