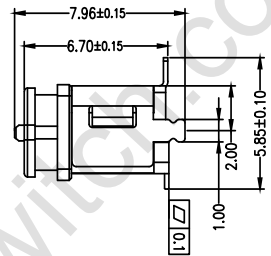
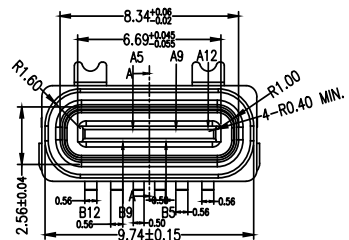
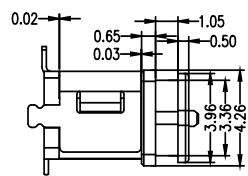
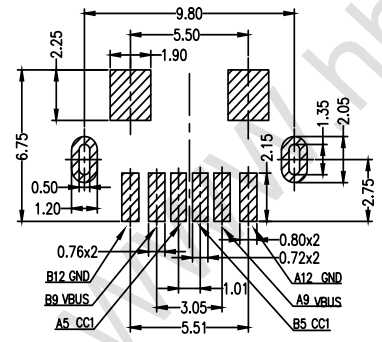
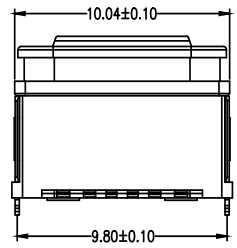
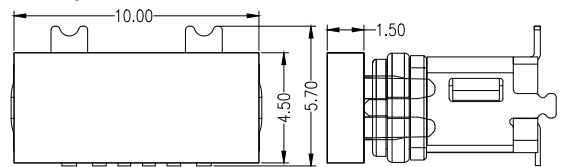


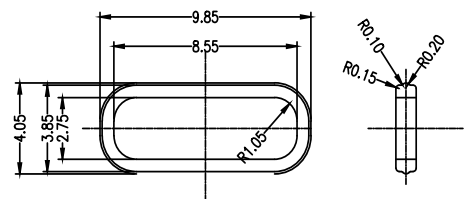
- Note:
- Material:
 - Housing: PA9T
 - Contact: C5191, t=0.20mm
 - Inner Housing: PA9T
 - OutShell: SUS304-1/2H,
 - Middle plate: SUS t=0.2mm.
 - ELECTRICAL:
 - CURRENT RATING:
 - VBUS AND GND CONTACTS RATED AT 1.5A PARALLELED FOR A TOTAL OF 3A;
 - INITIAL CONTACT RESISTANCE :40 MEGOHMS
 - DIELECTRIC WITHSTANDING VOLTAGE:
 - 100V AC MIN;
 - MECHANICAL CHARACTERISTICS:
 - MATING FORCE: 5~20N
 - UNMATING FORCE: 8~20N (INITIAL), 6~20N (AFTER 10000 CYCLES)
 - FREQUENCY: 200±50 CYCLES / HOUR, 10000 CYCLES
 - OPERATING TEMPERATURE ; -40~80°.
 - WATERPROOF: IP-X7.



Cap dimensions



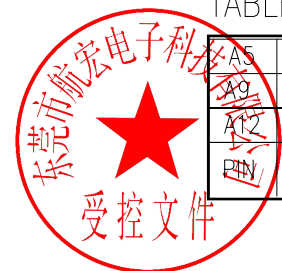
建议防水圈



PCB LAYOUT 图仅供参考

TABLE B

A5	CC1	B12	GND
A9	VBUS	B9	VBUS
A12	GND	B5	CC2
	SIGNAL NAME	PIN	SIGNAL NAME



DESIGN	MISS ZENG	SC ALL			TOLERANCE	ANGLES	品名:
DRAWIGN	MISS LI	ANIT	mm				TYPE-C连接器
CHECK	Mr. ZENG	SIZE	A4 : 210*297				型号:
APPROVAL		VERSION	01				TYPE-C 6P直立式半包 H6. 8防水型母座



东莞市航宏电子科技有限公司
Dongguan Hanghong Electronics Co., Ltd.