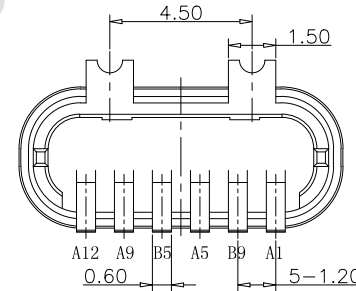
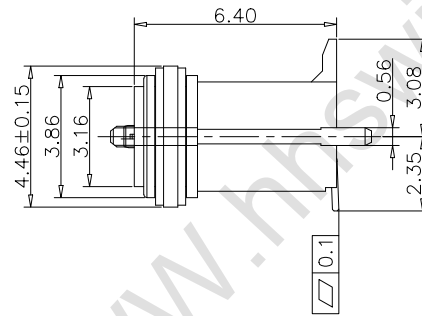
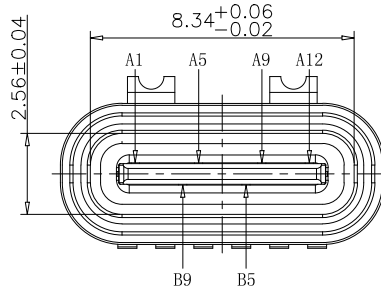


RECOMMEND P.C.B LAYOUT (COMPONENT SIDE)  
TOLERANCE FOR PCB LAYOUT IS ±0.05

- NOTES:  
SPECIFICATION:  
1. CURRENT RATING: 3.0 A  
2. VOLTAGE RATING: 3.0 V  
3. VBUS & GND PINS AND OTHER PINS: 40mΩ/PIN MAX  
SHIELD: 50mΩ/MAX  
LLCR MAX. CHANGE OF ALL PINS: 10Ωm  
4. INSULATION RESISTANCE: 100MΩ MIN  
5. DIELECTRIC WITHSTAND VOLTAGE, AC 100V FOR 1MINUTE  
6. INSERTION FORCE: 0.5~2.0kgf  
7. UNMATING FORCE: 0.8~2.0kgf  
8. DURABILITY: 10000 CYCLES  
9. OPERATING TEMPERATURE: -35°C~+85°C  
10. THE PEAK TEMPERATURE ON THE BOARD SHALL BE MAINTAINED FOR 10 SECONDS AT 210-230°C  
11. WATERPROOF: IP-X7.



USB TYPE C PIN ASSIGNMENTS

PIN NUMBER	SIGNAL NAME	PIN NUMBER	SIGNAL NAME
A1	GND	B9	VBUS
A5	CC1	B5	CC2
A9	VBUS		
A12	GND		

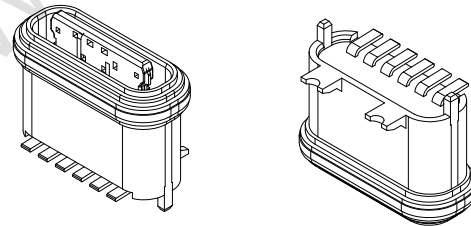
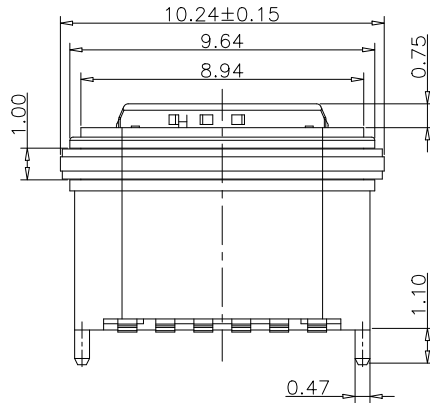


TABLE:

NO	PART	QTY	Material
1	SHELL	1	ZINC ALLOY, NI PLATED
2	CONTACT	6	COPPER STEEL, TIN/Au/Ni PLATED
3	MID PLATE	1	STAINLESS STEEL, NO PLATING
4	IND HOUSING	1	HIGH TEMPERATURE RESISTANT PLASTIC BLACK UL94 V-0
5	WATERPROOF RING	1	SILICONE UL94 V-0 BLACK

DESIGN	MISS ZENG	SC ALL	
DRAWING	MISS LI	ANIT	mm
CHECK	Mr. ZENG	SIZE	A4 : 210*297
APPROVAL		VERSION	01



TOLERANCE	ANGLES

品名: TYPE-C连接器  
型号: TYPE-C 6P 立贴防水母座 L=7.15mm 带钢片



东莞市航宏电子科技有限公司  
Dongguan Hanghong Electronics Co., Ltd.