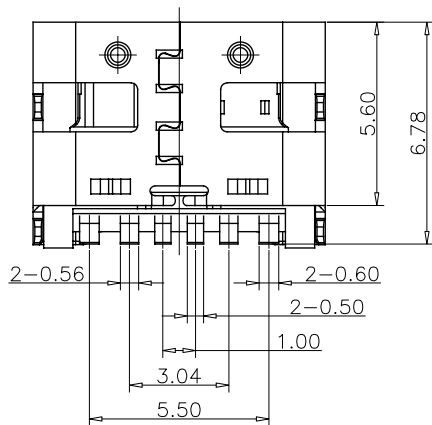
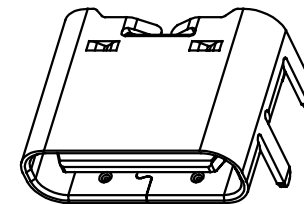
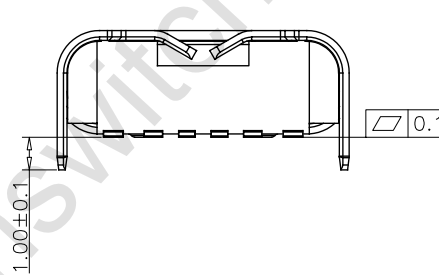
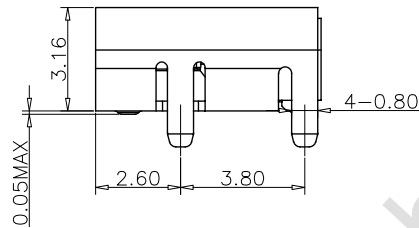
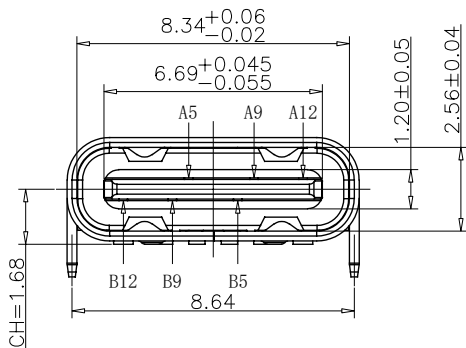


RECOMMEND P.C.B LAYOUT
TOLERANCE UNSPECIFIED ±0.05mm

NOTES:

SPECIFICATION:

1. CURRENT RATING: 3.0A MAX
2. VOLTAGE: 100 VAC
3. TEMPERATURE RANGE: -30°C~+85°C
4. CONTACT RESISTANCE: 40 MILLIONHM MAX
5. INSULATION RESISTANCE: 100 MEGOHMS MIN
6. INSERTION FORCE: 5N~20N
7. UNMATING FORCE: 8N~20N
8. DURABILITY: 10000 CYCLES

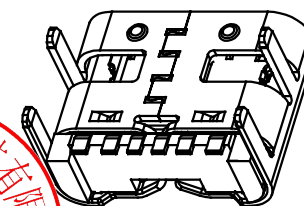
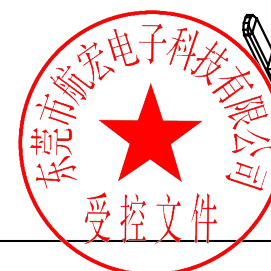


USB TYPE C PIN ASSIGNMENTS

PIN NUMBER	SIGNAL NAME	PIN NUMBER	SIGNAL NAME
A5	CC1	B12	GND
A9	VBUS	B9	VBUS
A12	GND	B5	CC2

T-BLE:

NO	PART	Q'TY	
1	SHELL	1	STAINLESS STEEL,NI PLATED
2	CONTACT	6	COPPER STEEL,TIN/Au/NI PLATED
3	HOUSING	1	HIGH TEMPERATURE RESISTANT PLASTIC BLACK UL94 V-0



DESIGN	MISS ZENG	SC ALL	
DRAWIGN	MISS LI	ANIT	mm
CHECK	Mr. ZENG	SIZE	A4 : 210*297
APPROVAL		VERSION	01

TOLERANCE	ANGLES
X.X ±0.30	X° ±5°
X.XX ±0.20	X.X ±2°
X.XXX ±0.10	

品名: TYPE-C
型号: TYPE C- 6P 四脚插板1.0



东莞市航宏电子科技有限公司
Dongguan Hanghong Electronics Co., Ltd.