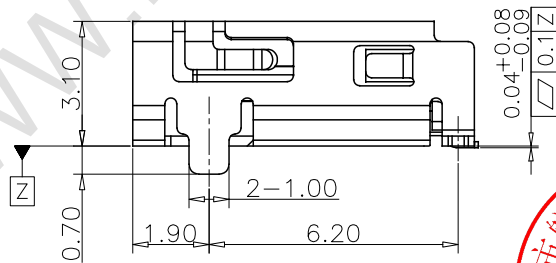
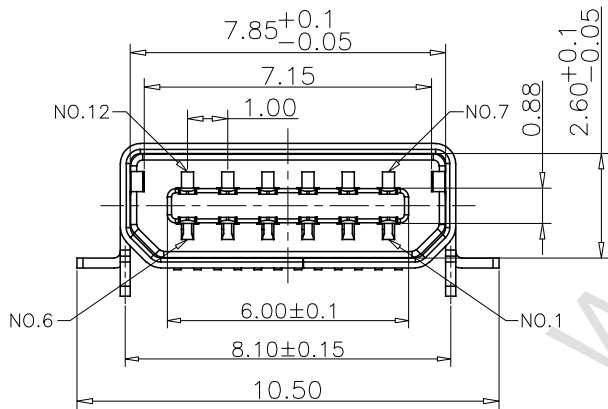
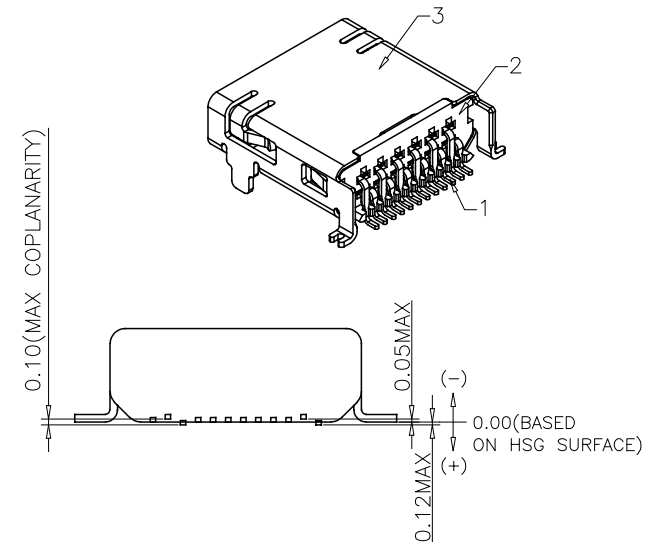


RECOMMENDED PCB LAYOUT(TOP SIDE)  
TOLERANCE=±0.05



TECHNICAL CHARACTERISTICS

- General Characteristics  
Durability:5000 cycles min
- Electrical Characteristics  
Contact resistance:50mΩ typical 100mΩ max  
Insulation resistance:>1000MΩ/500V DC
- Solderability  
Vaporphase:215°C±5°C ,30ses max  
IR reflow:260°C ,5sesMax  
Manual soldering:370°C ,3ses Max
- Environmental Characteristics  
Operating temperature:-40°C~85°C  
Operating humidity:10%~+95%RH



TABLE:

NO	PART	Q'TY	Material
1	TERMINAL	10	COPPER ALLOY T=0.15mm,Ni 50u"Min;Au G/F;Au u"
2	HOUSING	1	HIGH TEMPERATURE THERMOPLASTIC UL 94V-0 BLACK
3	SHELL	1	COPPER ALLOY T=0.25mm,Ni 50u"Min;Tin 60u"Min

DESIGN	MISS ZENG	SC ALL		TOLERANCE	ANGLES
DRAWIGN	MISS LI	ANIT	mm	X.X ±0.30	X° ±5°
CHECK	Mr. ZENG	SIZE	A4 : 210*297	X.XX ±0.20	X.X ±2°
APPROVAL		VERSION	01	X.XXX ±0.10	

品名: USB  
型号: MINI USB 12P 前插后贴



东莞市航宏电子科技有限公司  
Dongguan Hanghong Electronics Co., Ltd.