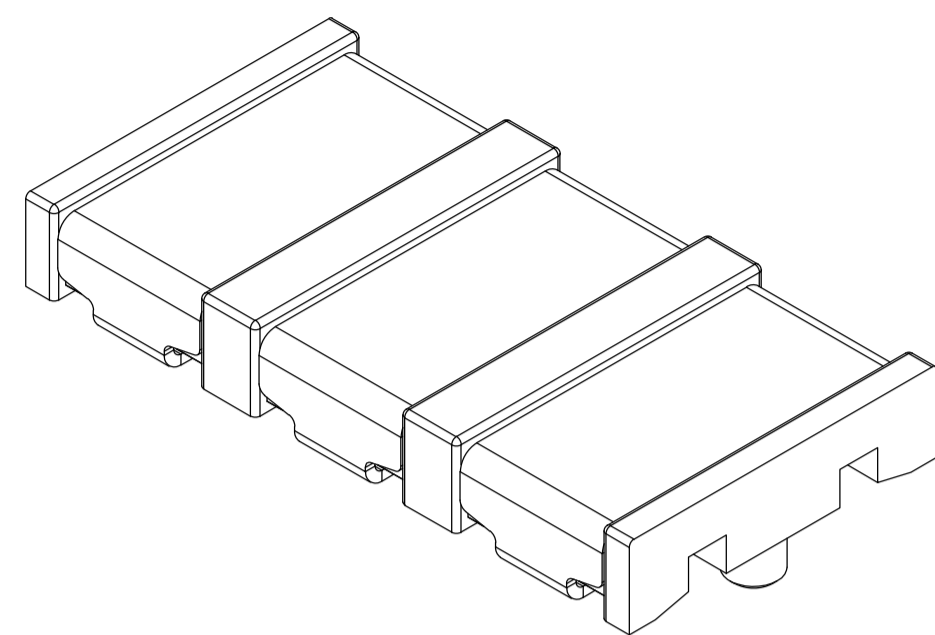
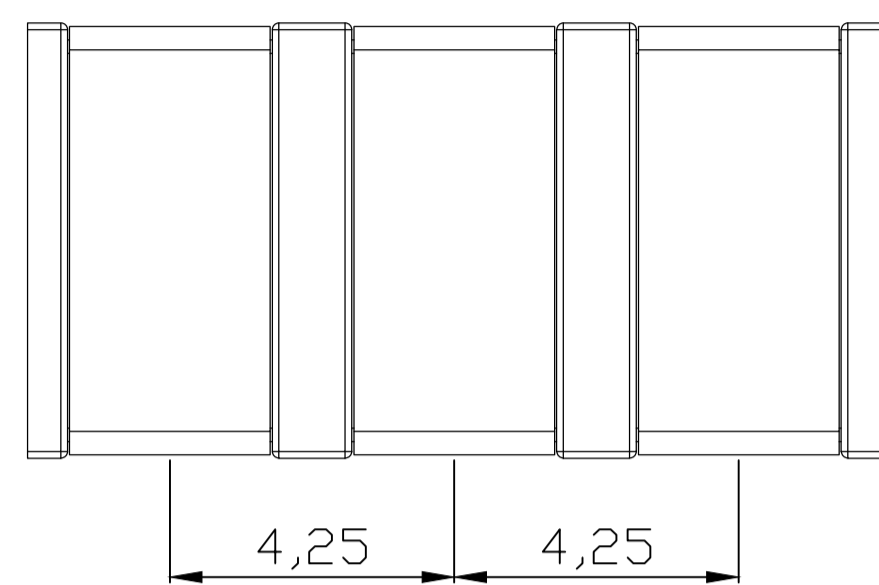
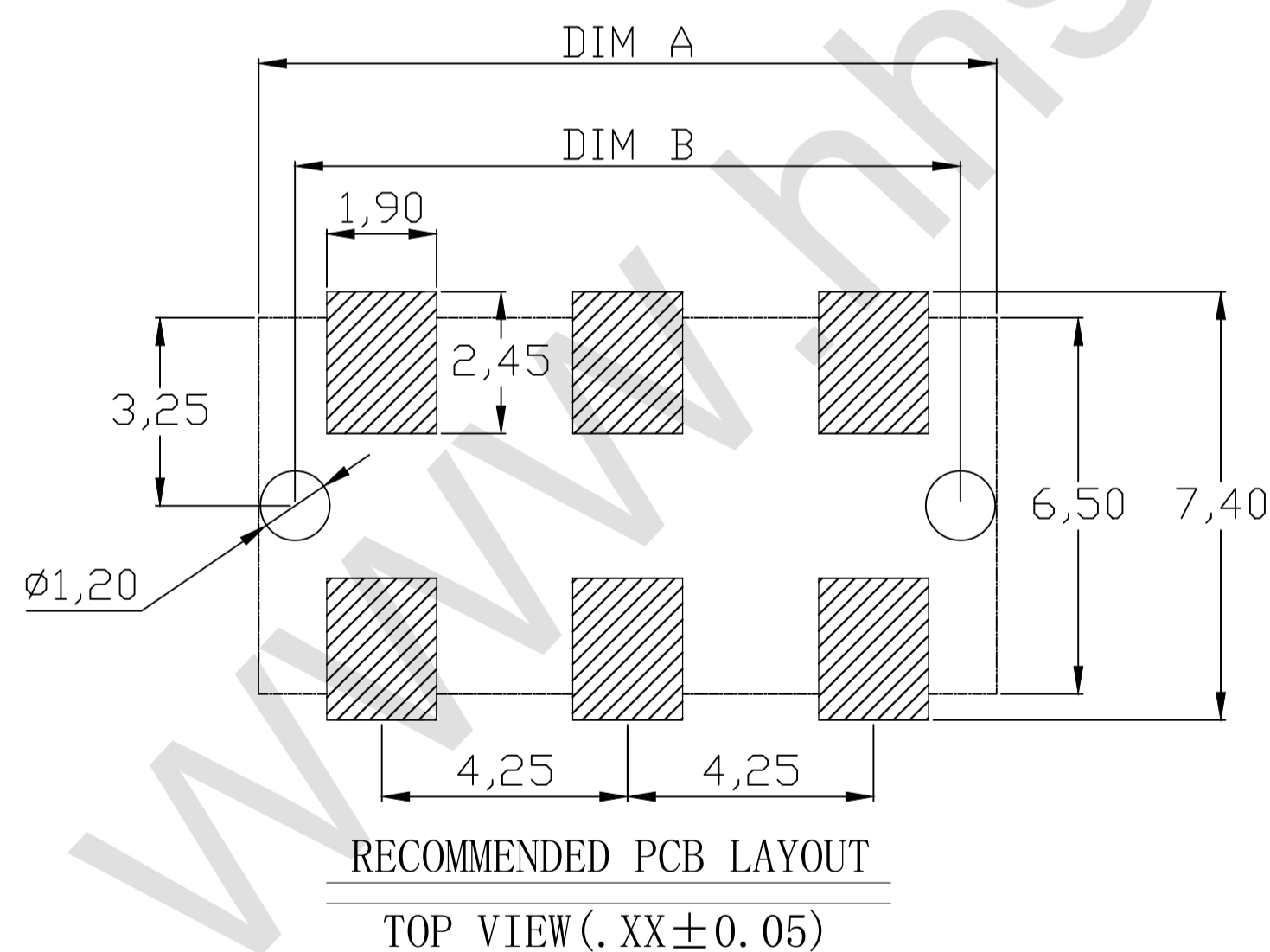
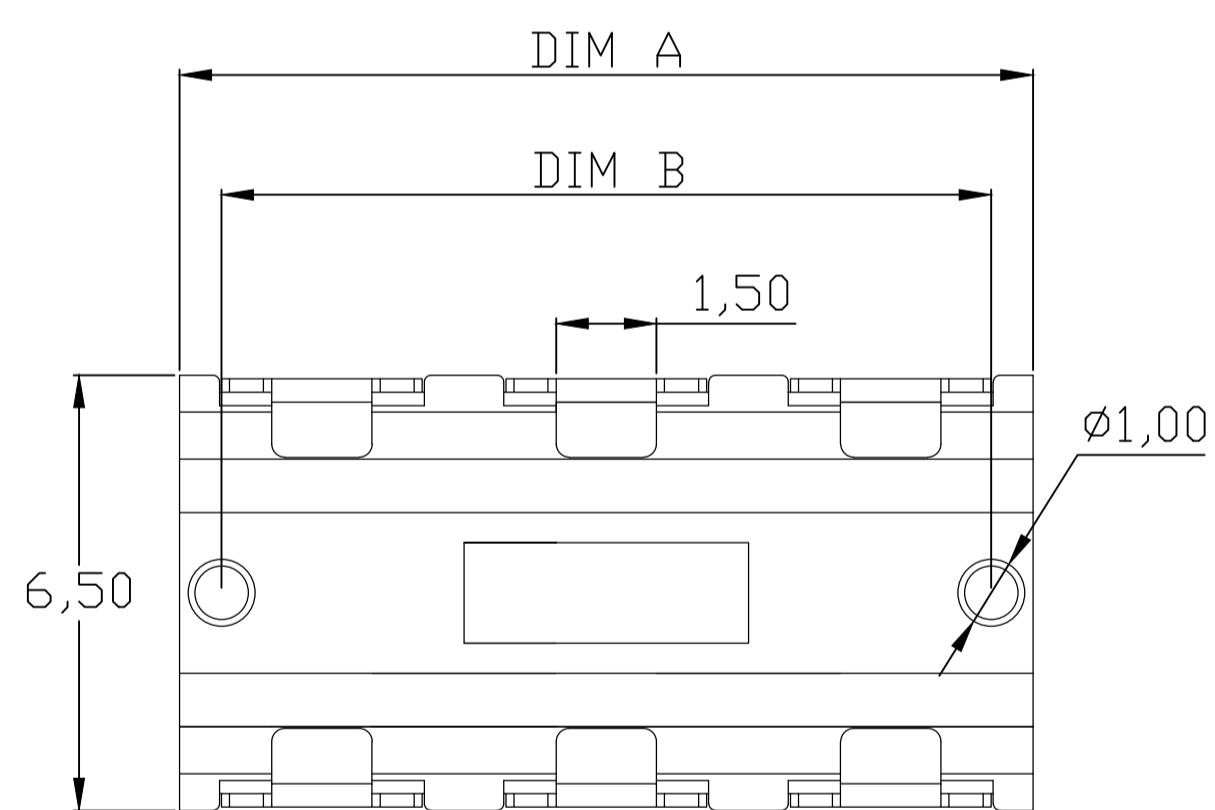
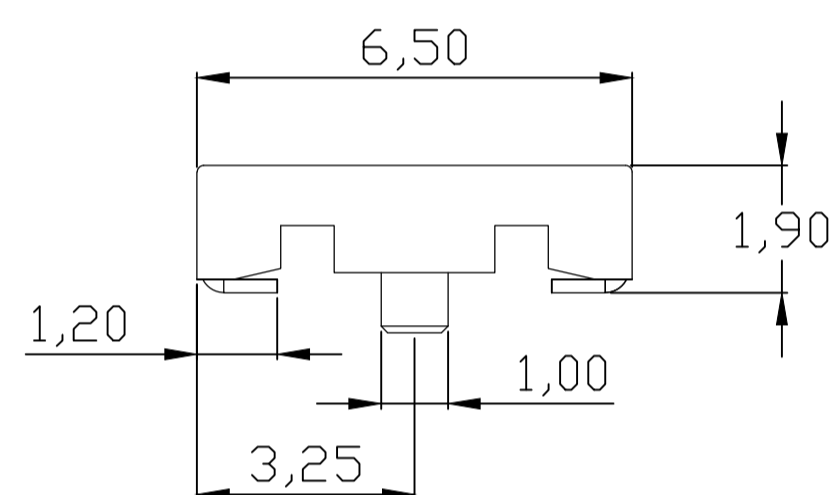
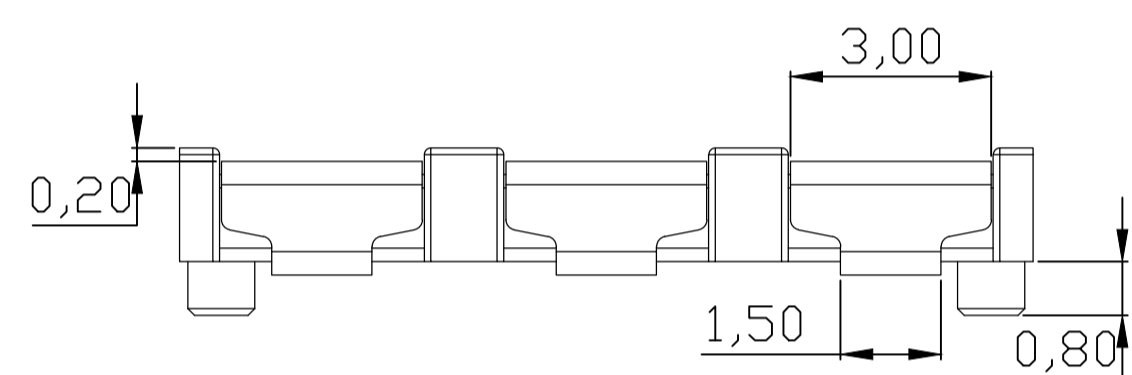


F E D C B A



性能:

- 额定电流: 5.0A
- 额定电压: 30V
- 耐电压: 500V
- 接触电阻: 30mΩ max
- 绝缘电阻: 500MΩ
- 工作温度: -55℃~+125℃
- 使用寿命: 5000次以上
- 塑件(材质): PA9T黑色, 耐高温260℃
- 接触点(材质): 黄铜C2680, 触点镀金3U"



规格型号	DIM A	DIM B
BHC040-2PD190	8.50	7.25
BHC040-3PD190	12.75	11.5
BHC040-4PD190	17.00	15.75
BHC040-5PD190	21.25	20.00
BHC040-6PD190	25.5	24.25



1

2

3

4

1

2

3

4

DESIGN	MISS ZENG	SC ALL			未注公差 TOLERANCE		品名: 电池连接器	
DRAWIGN	MISS LI	ANIT	MM		X. ±0.35	X.XX ±0.15		型号: BHC040-4PD190
CHECK	Mr. ZENG	SIZE	A4: 210*297		X. X ±0.25	X. XXX ±0.05		
APPROVAL		VERSION	01					



东莞市航宏电子科技有限公司
Dongguan Hanghong Electronics Co., Ltd.

F E D C B A